

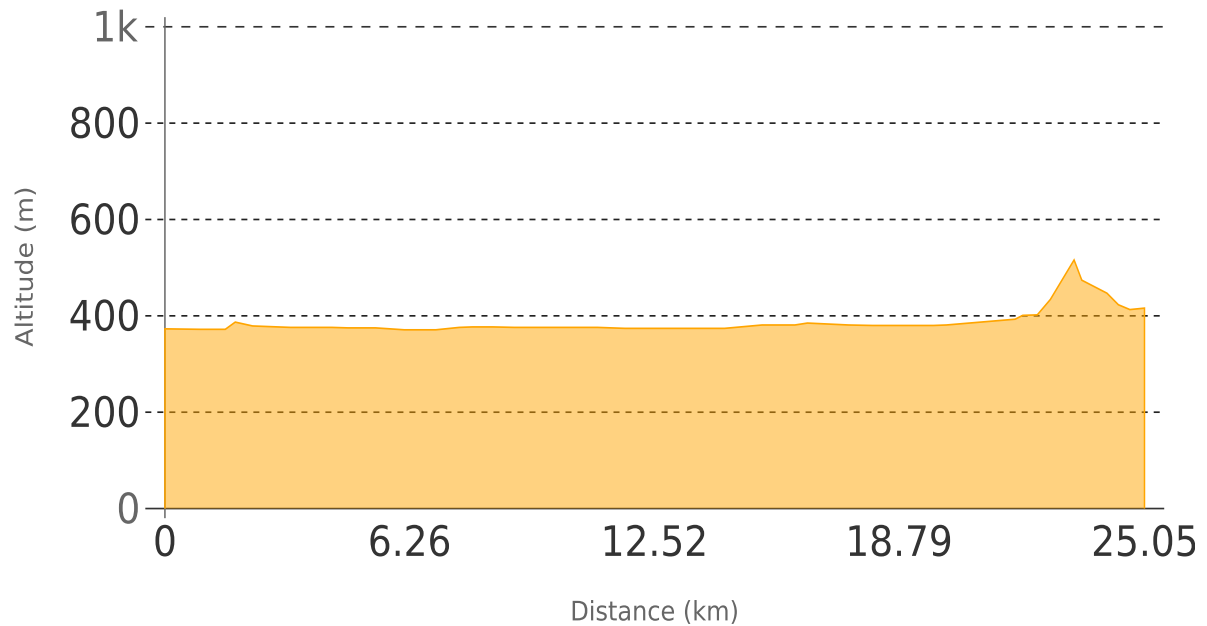
VFS06 - Stage Vevey-Aigle

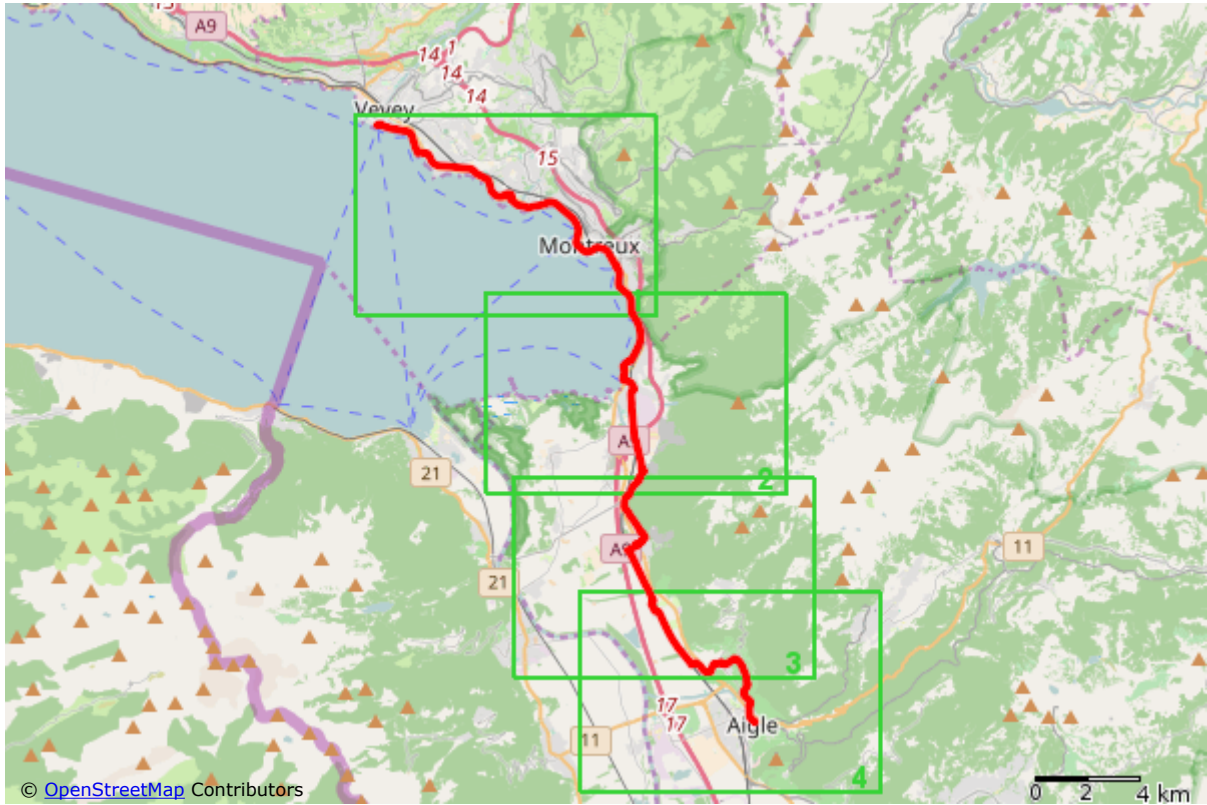
Total length 25.3 km

Description

The route skirts around Lake Geneva, crossing Montreux and proceeding until Villeneuve. Leaving the lake behind, the course continues levelly till it arrives at the entrance of Aigle. It then rises to pass Yvorne and a lovely panoramic point of the Rhône Valley, before descending to Aigle.

Elevation chart





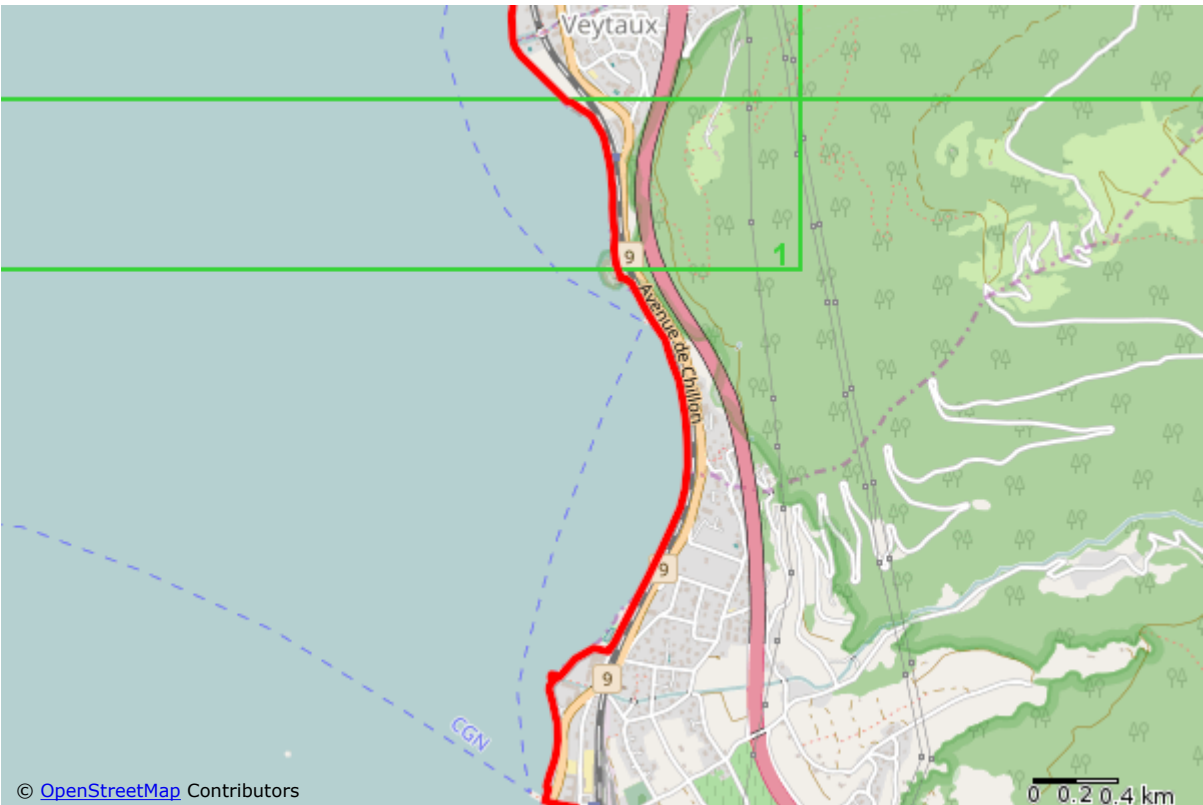
Overview map



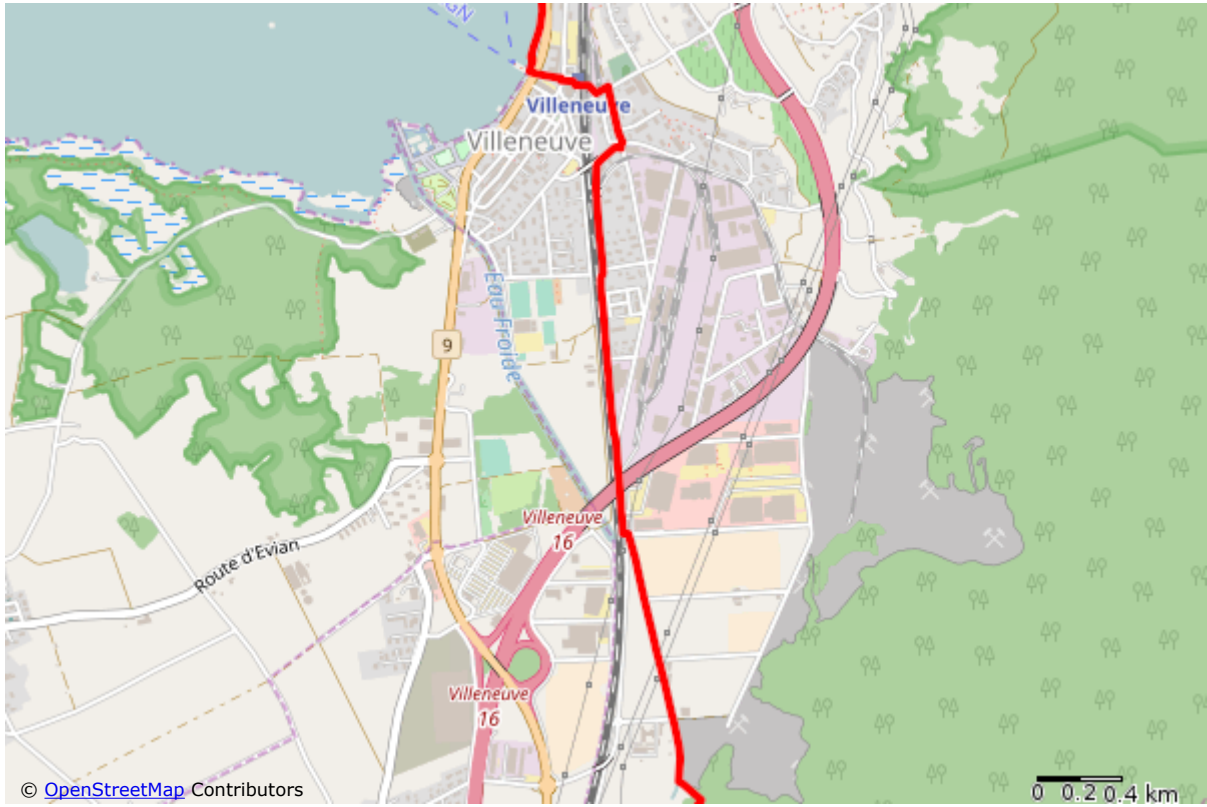
Detail map #1



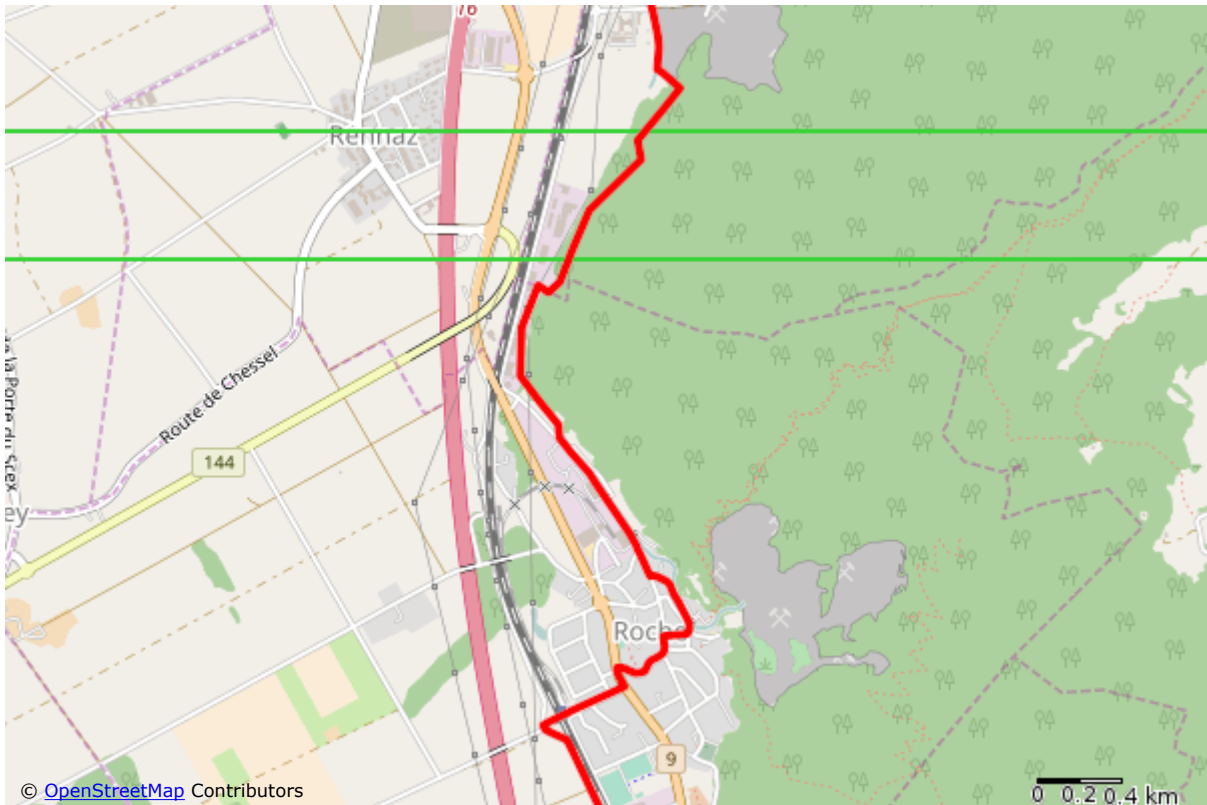
Detail map #2



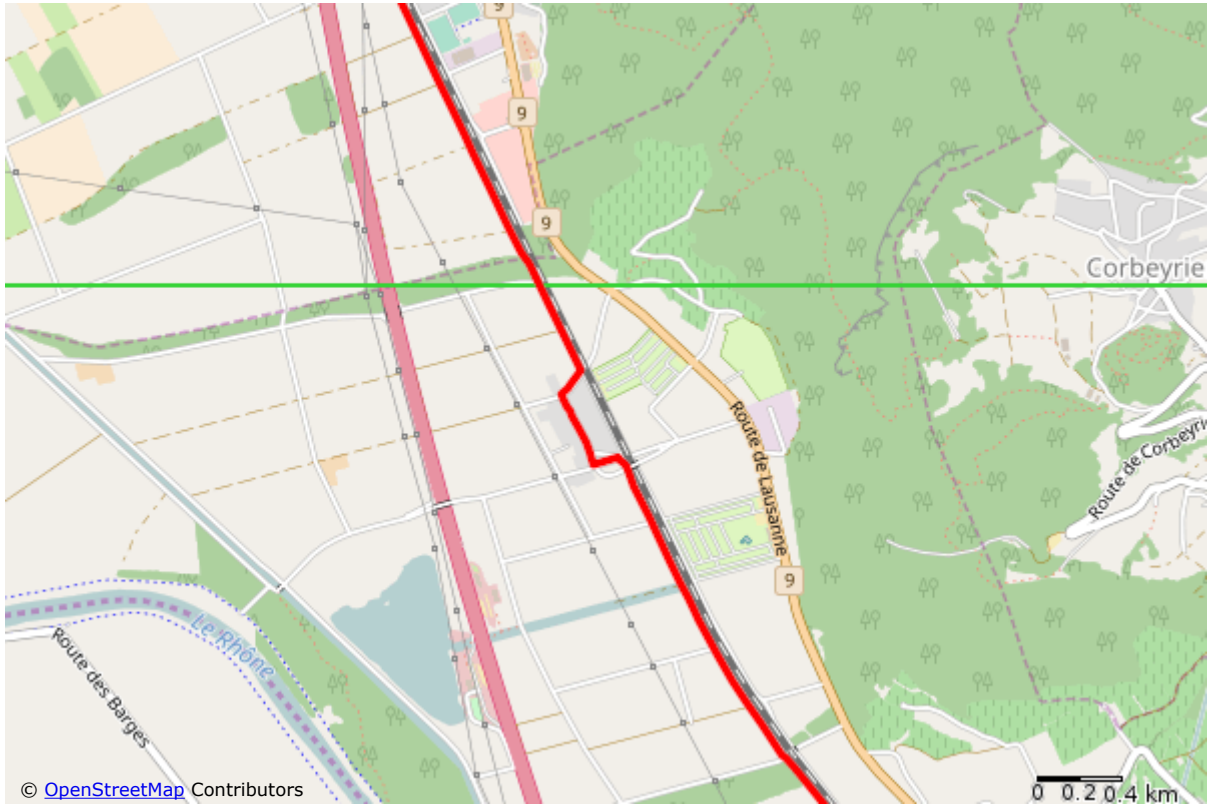
Detail map #3



Detail map #4



Detail map #5



Detail map #6



Detail map #7