

Leg 24 - From Aulla to Sarzana

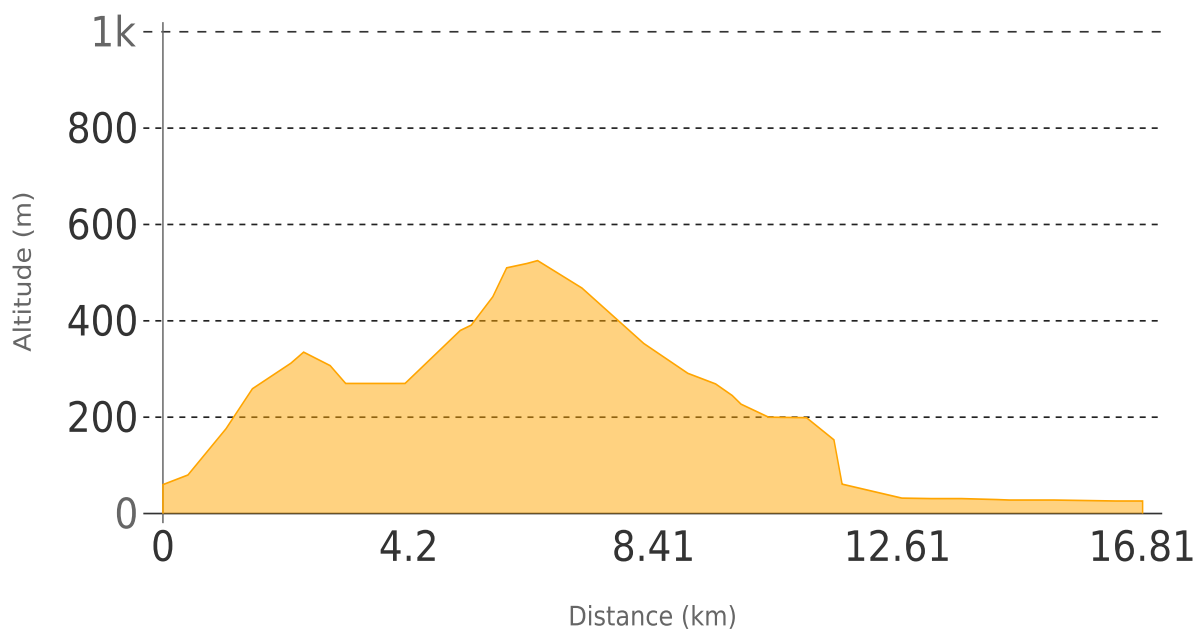
Total length 17.4 km

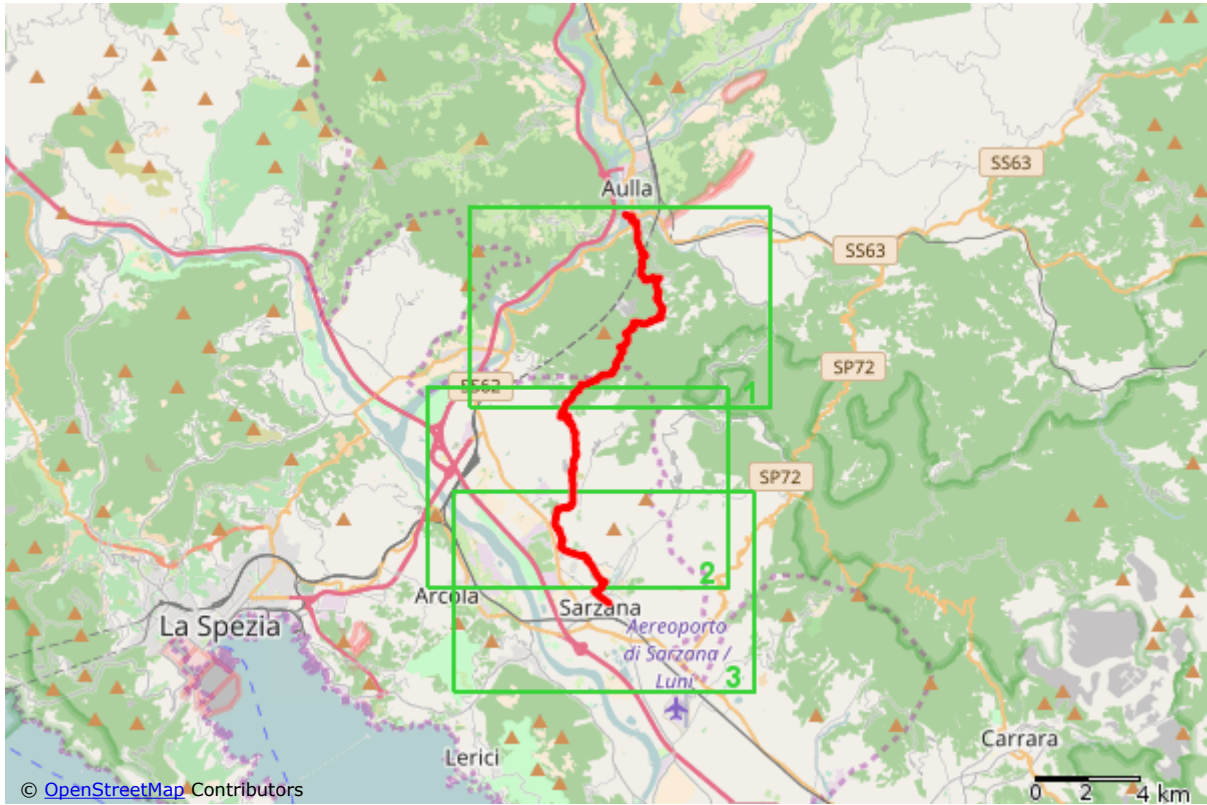
Description

The majority of the leg is on dirt road, it is quite demanding, very beautiful and it gifts the traveler with the first view of the sea.

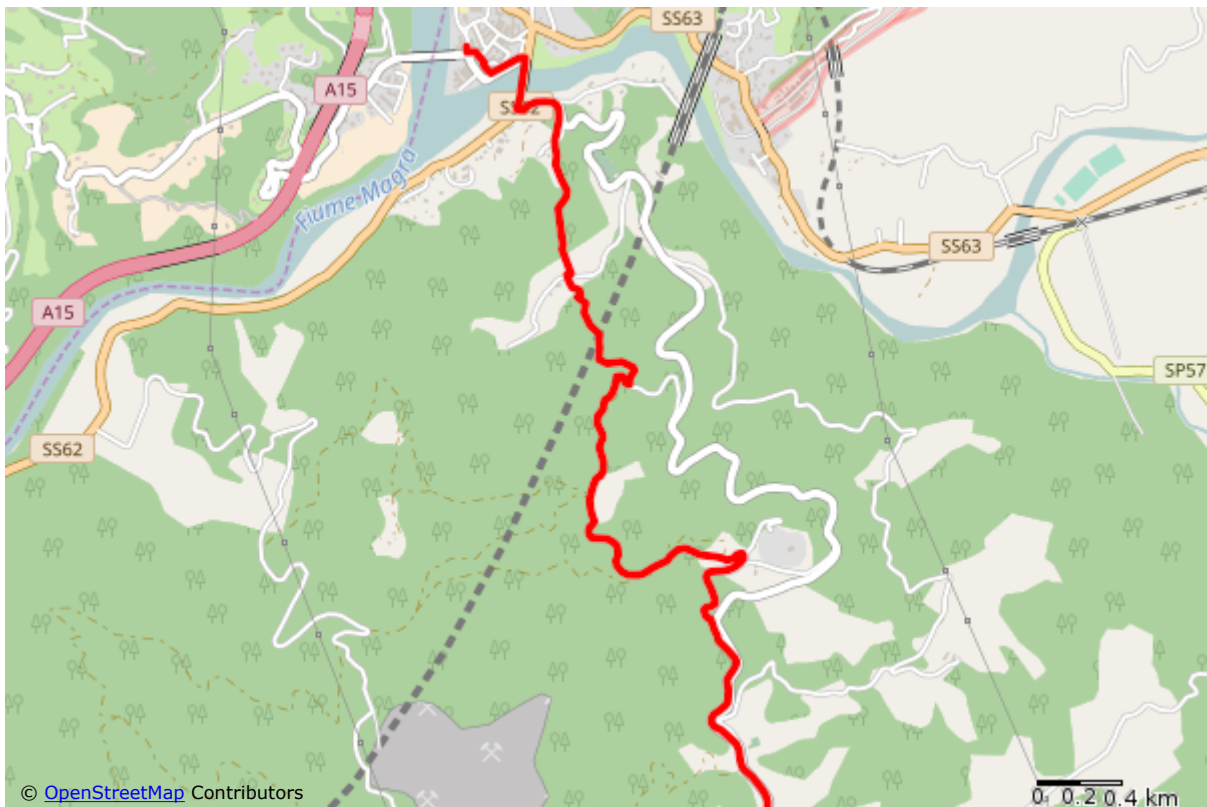
The atmospheres of the ancient villages along the way are really interesting, together with the visit to the ruins of the Brina Castle and of the nice village of Sarzana

Elevation chart

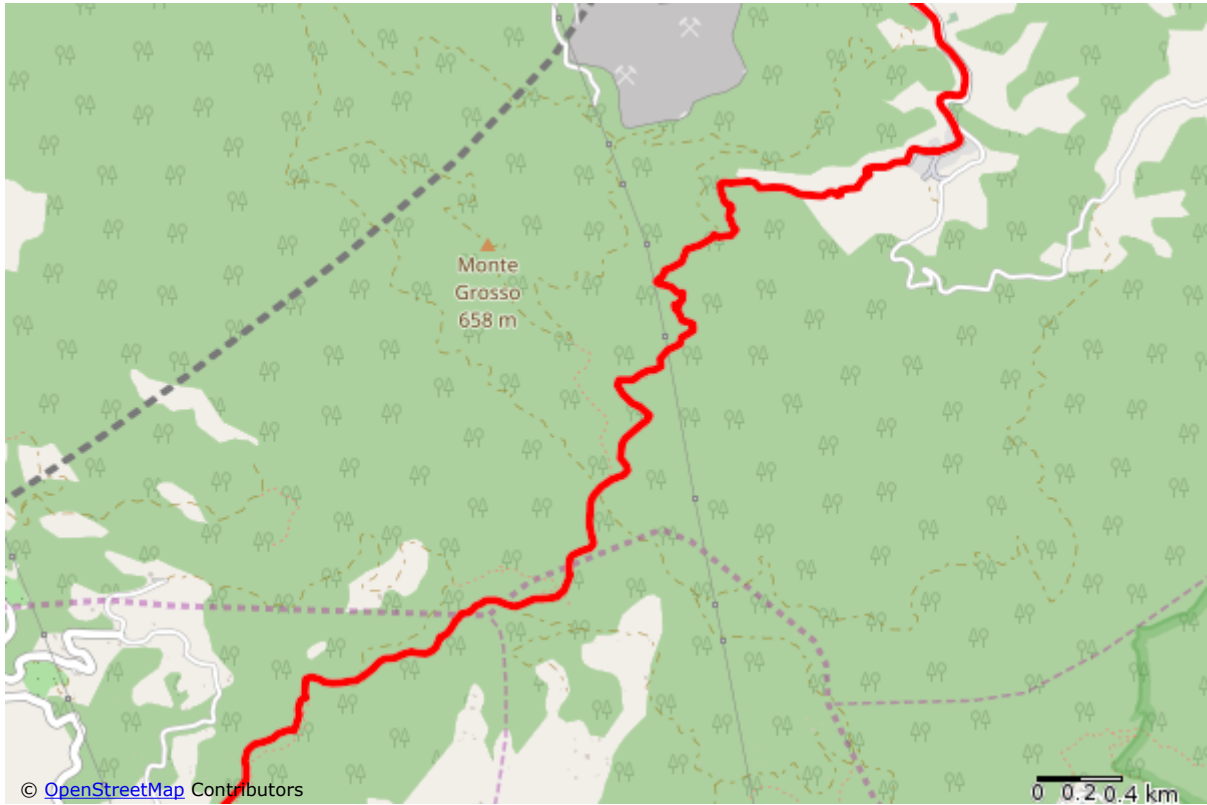




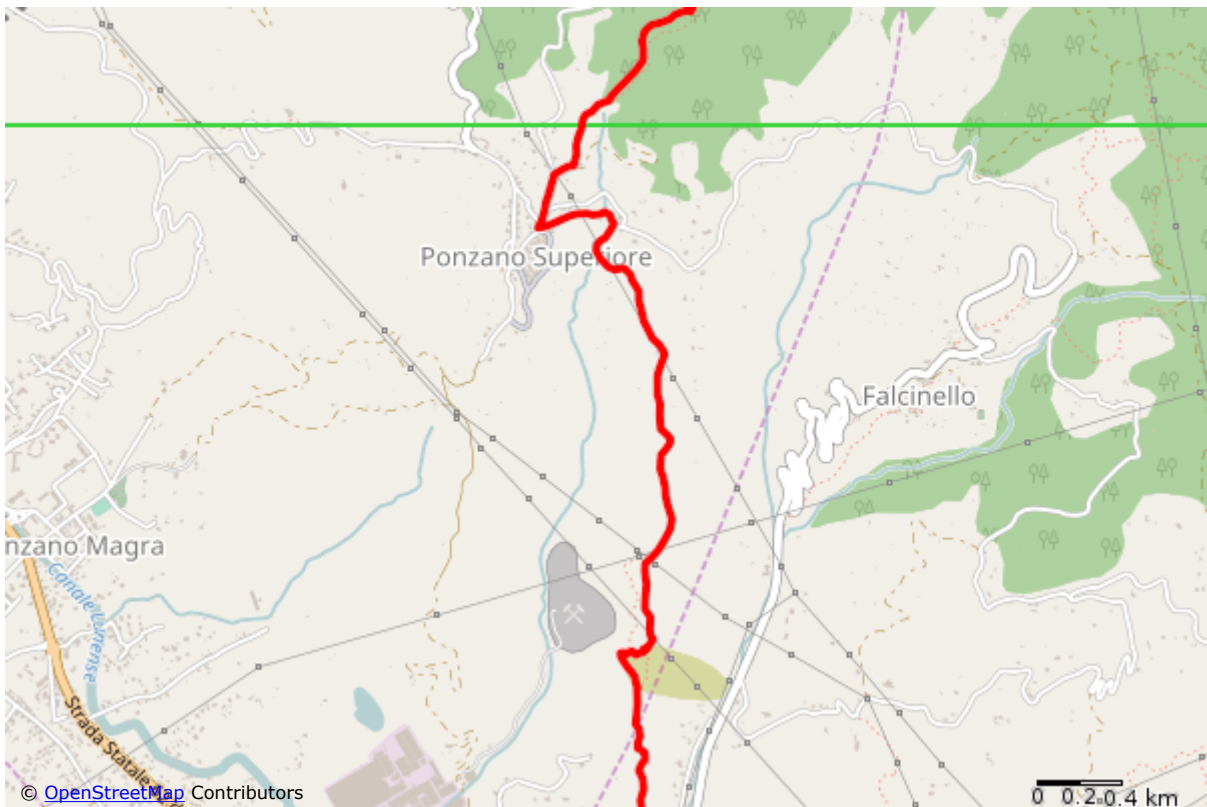
Overview map



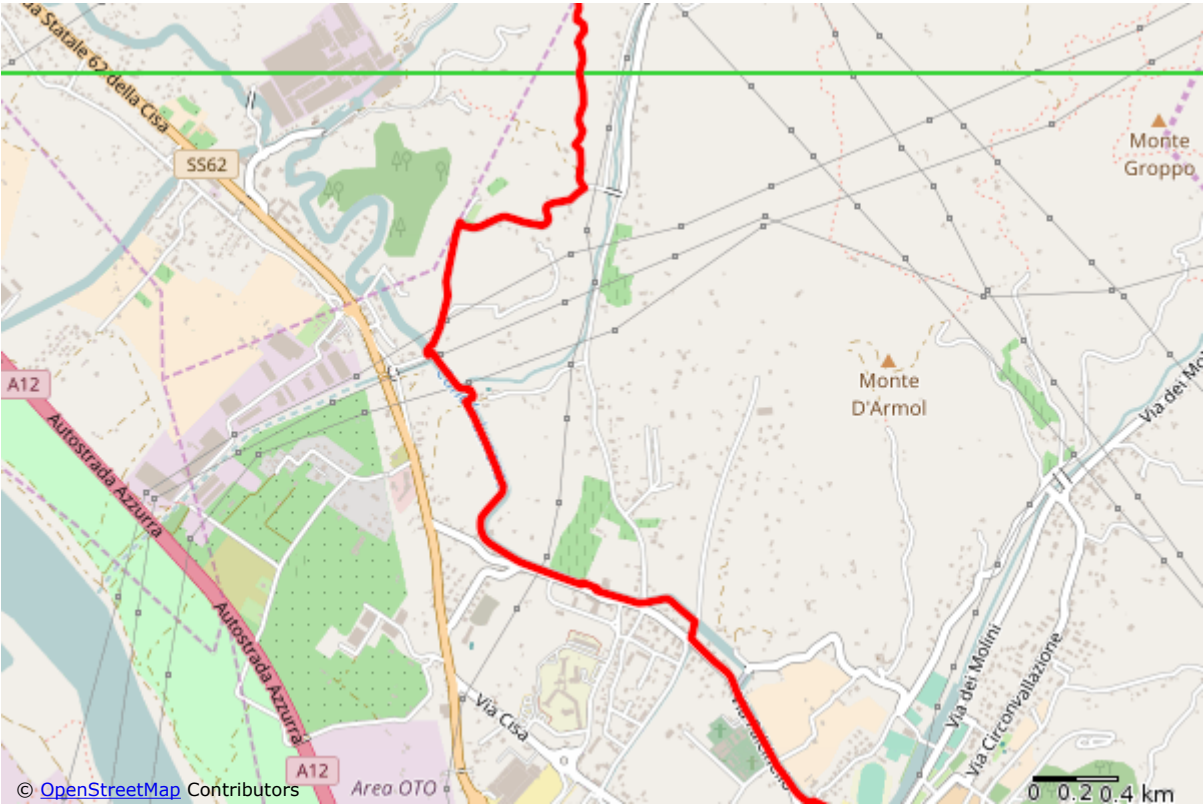
Detail map #1



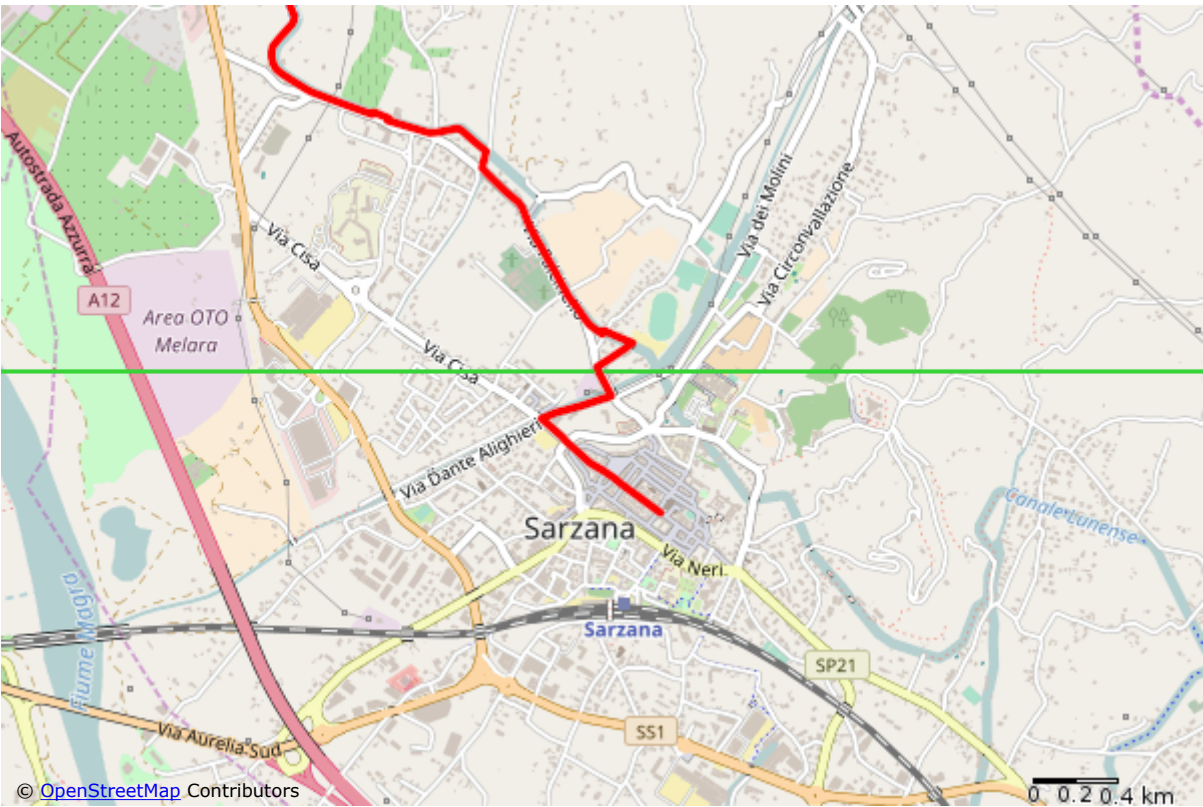
Detail map #2



Detail map #3



Detail map #4



Detail map #5